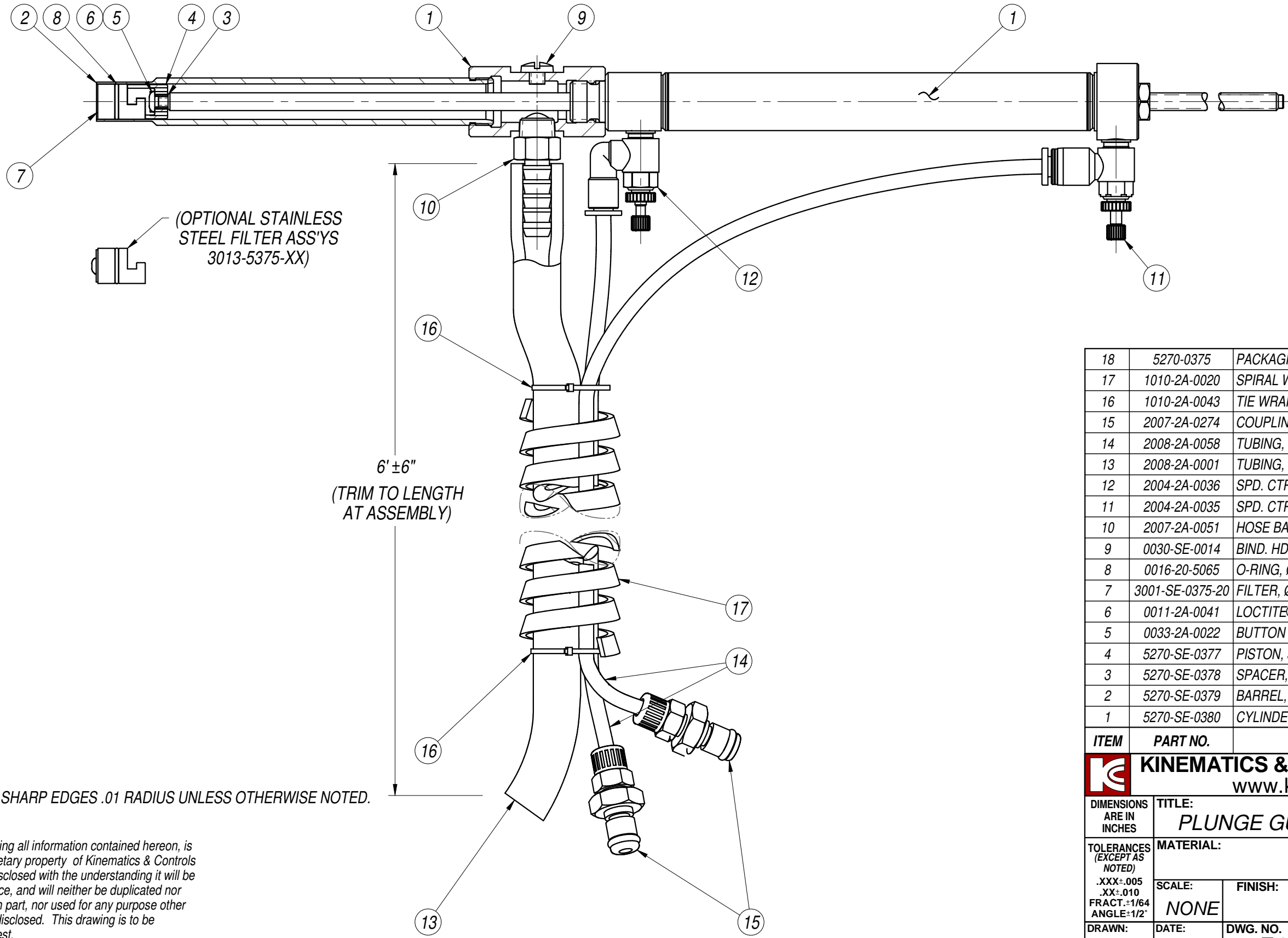


1

2

3

PRINTED: 12/15/2017	STATUS: Released	DWG. NO. 5270-SE-0375-35	SH. 1	REV. -
REVISIONS				
REV.	DESCRIPTION	DATE BY	DATE APP'D	
-	INITIAL RELEASE.	3/3/15 CIW	3/5/15 JJR	



(OPTIONAL STAINLESS
STEEL FILTER ASS'YS
3013-5375-XX)

6' ± 6"
(TRIM TO LENGTH
AT ASSEMBLY)

NOTES:
1. BREAK ALL SHARP EDGES .01 RADIUS UNLESS OTHERWISE NOTED.

⊕ NOTICE!
This drawing, including all information contained hereon, is the exclusive proprietary property of Kinematics & Controls Corporation. It is disclosed with the understanding it will be retained in confidence, and will neither be duplicated nor copied in whole or in part, nor used for any purpose other than that for which disclosed. This drawing is to be returned upon request.

18	5270-0375	PACKAGING ASS'Y, Ø3/8" PLUNGE GUN	1	EA.
17	1010-2A-0020	SPIRAL WRAP, NYLON	5.25	FT.
16	1010-2A-0043	TIE WRAP, 3/32" x 4"	2	EA.
15	2007-2A-0274	COUPLING INSERT, 1/8" x 5/32"PTF	2	EA.
14	2008-2A-0058	TUBING, POLYURETHANE, Ø5/32" O.D.	12	FT.
13	2008-2A-0001	TUBING, FLEX P.V.C., Ø1/2" OD x Ø1/4" ID	6	FT.
12	2004-2A-0036	SPD. CTRL FIT., 180°, Ø5/32" POT x 10-32	1	EA.
11	2004-2A-0035	SPD. CTRL FIT., 90°, Ø5/32" POT x 10-32	1	EA.
10	2007-2A-0051	HOSE BARB (MOD.), S.S. 1/8-27 NPT, 1/4"	1	EA.
9	0030-SE-0014	BIND. HD. SCR., 8-32 x 1/8", S.S., SLOTTED	1	EA.
8	0016-20-5065	O-RING, Ø.306" I.D. x Ø.034" X-SECT.	1	EA.
7	3001-SE-0375-20	FILTER, Ø3/8" MOULDED CLOTH MESH	1	EA.
6	0011-2A-0041	LOCTITE® 243, MED. STRENGTH w/PRIMER	0.1	GM.
5	0033-2A-0022	BUTTON HD. M.S., 4-40UNC x 5/16", S.S.	1	EA.
4	5270-SE-0377	PISTON, 3/8" PLUNGE GUN	1	EA.
3	5270-SE-0378	SPACER, 3/8" PLUNGE GUN	1	EA.
2	5270-SE-0379	BARREL, Ø.3/8" x 3.5" STROKE	1	EA.
1	5270-SE-0380	CYLINDER/GUN BLOCK ASS'Y	1	EA.

KINEMATICS & CONTROLS CORPORATION www.kcontrols.com				
DIMENSIONS ARE IN INCHES	TITLE: PLUNGE GUN, Ø3/8" x 0"-3.5" STROKE			
TOLERANCES (EXCEPT AS NOTED) .XXX±.005 .XX±.010 FRACT.±1/64 ANGLE±1/2°	MATERIAL: SEE TABLE		FINAL ASS'Y 5270-0375-35	
DRAWN: CIW	SCALE: NONE	FINISH: N/A	REQ'D. 1	NEXT ASS'Y 5270-0375-35
DATE: 3/3/15	DWG. NO. 5270-SE-0375-35		REV. -	

1

2

3

4